



Brussels, 31.10.2022  
C(2022) 7545 final

ANNEXES 1 to 4

## ANNEXES

*to the*

**COMMISSION DELEGATED REGULATION (EU) .../...**

**amending and correcting the regulatory technical standards laid down in Delegated Regulation (EU) 2022/1288 as regards the content and presentation of information in relation to disclosures in precontractual documents and periodic reports for financial products investing in environmentally sustainable economic activities**

**Template periodic disclosure for the financial products referred to in Article 8, paragraphs 1, 2 and 2a, of Regulation (EU) 2019/2088 and Article 6, first paragraph, of Regulation (EU) 2020/852**

**Product name:** Katla fund – Global Equity

**Legal entity identifier:** 549300MVB7NQQVQ82VL86

## Environmental and/or social characteristics

### Did this financial product have a sustainable investment objective?

<input checked="" type="radio"/> <input type="radio"/> <b>Yes</b>	<input checked="" type="radio"/> <input type="radio"/> <input checked="" type="checkbox"/> <b>No</b>
<p><input type="checkbox"/> It made <b>sustainable investments with an environmental objective:</b> ___%</p> <ul style="list-style-type: none"> <li><input type="checkbox"/> in economic activities that qualify as environmentally sustainable under the EU Taxonomy</li> <li><input type="checkbox"/> in economic activities that do not qualify as environmentally sustainable under the EU Taxonomy</li> </ul> <p><input type="checkbox"/> It made <b>sustainable investments with a social objective:</b> ___%</p>	<p><input type="checkbox"/> It <b>promoted Environmental/Social (E/S) characteristics</b> and while it did not have as its objective a sustainable investment, it had a proportion of ___% of sustainable investments</p> <ul style="list-style-type: none"> <li><input type="checkbox"/> with an environmental objective in economic activities that qualify as environmentally sustainable under the EU Taxonomy</li> <li><input type="checkbox"/> with an environmental objective in economic activities that do not qualify as environmentally sustainable under the EU Taxonomy</li> <li><input type="checkbox"/> with a social objective</li> </ul> <p><input checked="" type="checkbox"/> It promoted E/S characteristics, but <b>did not make any sustainable investments</b></p>



### To what extent were the environmental and/or social characteristics promoted by this financial product met?

*In general, the environmental and/or social characteristics were met to the investment manager's satisfaction. The sustainability indicators of the environmental and social characteristics of the portfolio showed improvement over the period.*

**Sustainable investment** means an investment in an economic activity that contributes to an environmental or social objective, provided that the investment does not significantly harm any environmental or social objective and that the investee companies follow good governance practices.

The **EU Taxonomy** is a classification system laid down in Regulation (EU) 2020/852, establishing a list of **environmentally sustainable economic activities**. That Regulation does not include a list of socially sustainable economic activities. Sustainable investments with an environmental objective might be aligned with the Taxonomy or not.

**Sustainability indicators** measure how the environmental or social characteristics promoted by the financial product are attained.

<b>Environmental</b>		<b>Scale (0-10)</b>	
•	Climate change and greenhouse gas emissions	7,5	higher better
•	Resource depletion, including water	7,6	higher better
•	Waste and pollution	3,6	lower better
<b>Social</b>			
•	Working conditions, including no child labour or slavery	5,5	higher better
•	Health and safety	1,9	lower better
•	Employee relations and diversity	8,6	higher better

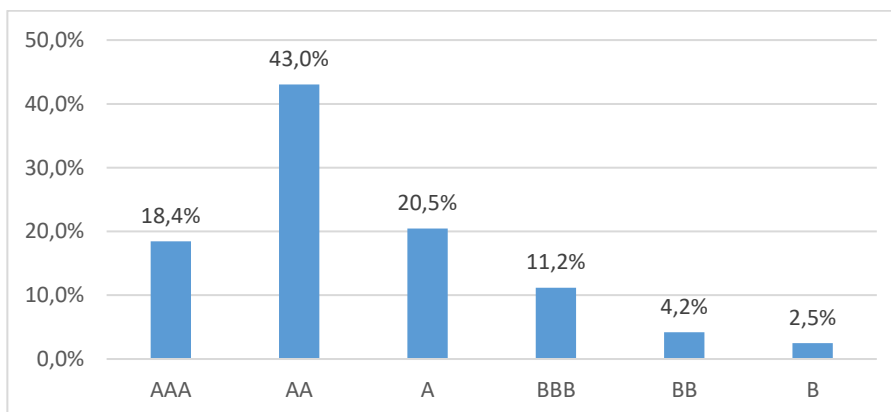
● **How did the sustainability indicators perform?**

<b>Indicators 2024</b>	<b>MSCI avg Score</b>		<b>Scale</b>
Carbon emission score	9,70	higher better	1-10
Carbon emission performance relative to peers *	5,47	higher better	1-10
Water Stress Score Quartile**	2,07	lower better	1-4
Natural Capital Theme Score	7,80	higher better	1-10
Pollution & Waste Theme Score	0,76	lower better	1-10
MSCI Toxic Emissions & Waste Score Quartile	3,62	lower better	1-10
MSCI Pollution & Waste Theme Weight	10,53	lower better	1-100
Company's Social Pillar Score Quartile **	2,10	lower better	1-4
MSCI Social Pillar Score	5,09	higher better	1-10
MSCI Health & Safety Exposure Score	1,94	lower better	1-10
MSCI Labor Management Employee Satisfaction Score	8,57	higher better	1-10

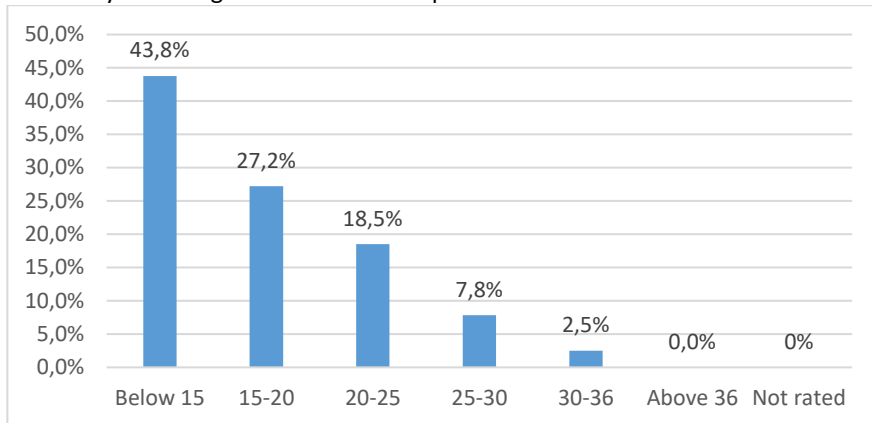
\*over 5 better than average within respective industry

\*\*average 3,0

MSCI ESG rating distribution of the portfolio at December 31st 2024



Sustanalytics rating distribution of the portfolio at December 31st 2024



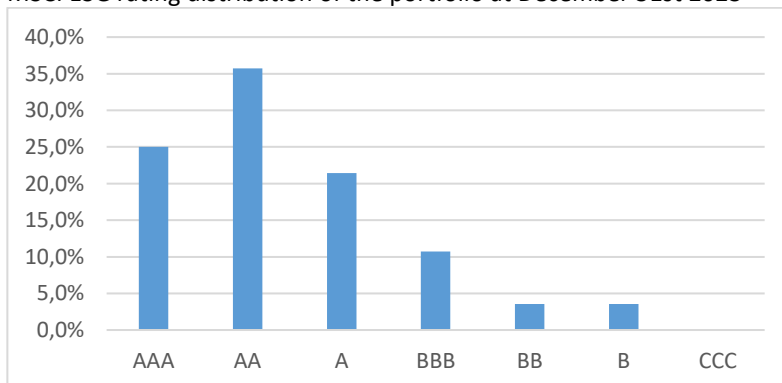
● **...and compared to previous periods?**

Indicators 2023	MSCI avg Score		Scale
Carbon emission score	9,49	higher better	1-10
Carbon emission performance relative to peers *	5,58	higher better	1-10
Water Stress Score Quartile**	2,25	lower better	1-4
Natural Capital Theme Score	6,76	higher better	1-10
Pollution & Waste Theme Score	1,11	lower better	1-10
MSCI Toxic Emissions & Waste Score Quartile	3,41	lower better	1-10
MSCI Pollution & Waste Theme Weight	10,68	lower better	1-100
Company's Social Pillar Score Quartile **	2,21	lower better	1-4
MSCI Social Pillar Score	5,02	higher better	1-10
MSCI Health & Safety Exposure Score	2,17	lower better	1-10
MSCI Labor Management Employee Satisfaction Score	8,71	higher better	1-10

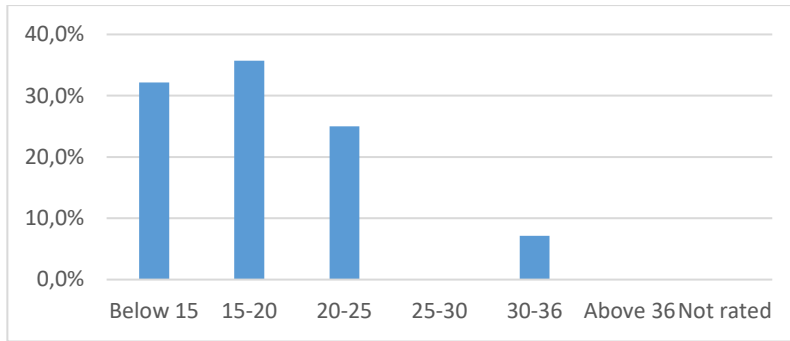
\*over 5 better than average within respective industry

\*\*average 3,0

MSCI ESG rating distribution of the portfolio at December 31st 2023



Sustanalytics rating distribution of the portfolio at December 31st 2023



- **What were the objectives of the sustainable investments that the financial product partially made and how did the sustainable investment contribute to such objectives?**

N/A

- **How did the sustainable investments that the financial product partially made not cause significant harm to any environmental or social sustainable investment objective?**

N/A

How were the indicators for adverse impacts on sustainability factors taken into account?

N/A

Were sustainable investments aligned with the OECD Guidelines for Multinational Enterprises and the UN Guiding Principles on Business and Human Rights? Details:

N/A

**Principal adverse impacts** are the most significant negative impacts of investment decisions on sustainability factors relating to environmental, social and employee matters, respect for human rights, anti-corruption and anti-bribery matters.



### How did this financial product consider principal adverse impacts on sustainability factors?

The EU Taxonomy sets out a “do not significant harm” principle by which Taxonomy-aligned investments should not significantly harm EU Taxonomy objectives and is accompanied by specific Union criteria.

The “do no significant harm” principle applies only to those investments underlying the financial product that take into account the EU criteria for environmentally sustainable economic activities. The investments underlying the remaining portion of this financial product do not take into account the EU criteria for environmentally sustainable economic activities.

Any other sustainable investments must also not significantly harm any environmental or social objectives.

The fund tracks the Mandatory PAI factors for informational and data tracking reasons.

End of year performance averages:

Total GHG Emissions/EVIC	42,86	MT CO <sub>2</sub> -eq/EVIC (M€)
Carbon Footprint/EVIC	8,08	MT CO <sub>2</sub> -eq/EVIC (M€)
GHG Intensity	36,0	MT CO <sub>2</sub> -eq/Sales (M€)
Exposure to Fossil Fuel Sectors	0	%
Non-Renewable Energy Consumption	42,52	%
Non-Renewable Energy Production	-	%
Energy Consumption Intensity	54,31	MWh/Sales (M€)
Number of Sites Env. Sensitive Areas	0	Number of Sites
Emissions to Water	-	1k MT
Hazardous Waste	342,81	1k MT
UNGC Violations (Latest)	Y	Y/N
Policies for Monitoring UNGC Compliance	72,0	Ratio
Mean Gender Pay Gap	4	%
Median Gender Pay Gap	3,6	%
Board Gender Diversity	37,04	% Female Members/Total Members
Exposure to Controversial Weapons (Latest)	N	Y/N

The list includes the investments constituting the **greatest proportion of investments** of the financial product during the reference period which is: 31.12.2024



## What were the top investments of this financial product?

Largest investments	Sector	% Assets	Country
INTUITIVE SURGICAL INC	Health Care	6,25%	US
NASDAQ INC	Financials	5,23%	US
NOVO NORDISK A/S-B	Health Care	4,64%	DE
MOTOROLA SOLUTIONS INC	Information Technology	4,56%	US
CHIPOTLE MEXICAN GRILL INC	Consumer Staples	4,25%	US
FERRARI NV	Consumer Discretionary	4,21%	IT
COSTCO WHOLESALE CORP	Consumer Staples	4,13%	US

Asset allocation describes the share of investments in specific assets.

Taxonomy-aligned activities are expressed as a share of:

- **turnover** reflecting the share of revenue from green activities of investee companies.
- **capital expenditure** (CapEx) showing the green investments made by investee companies, e.g. for a transition to a green economy.
- **operational expenditure** (OpEx) reflecting green operational activities of investee companies.v

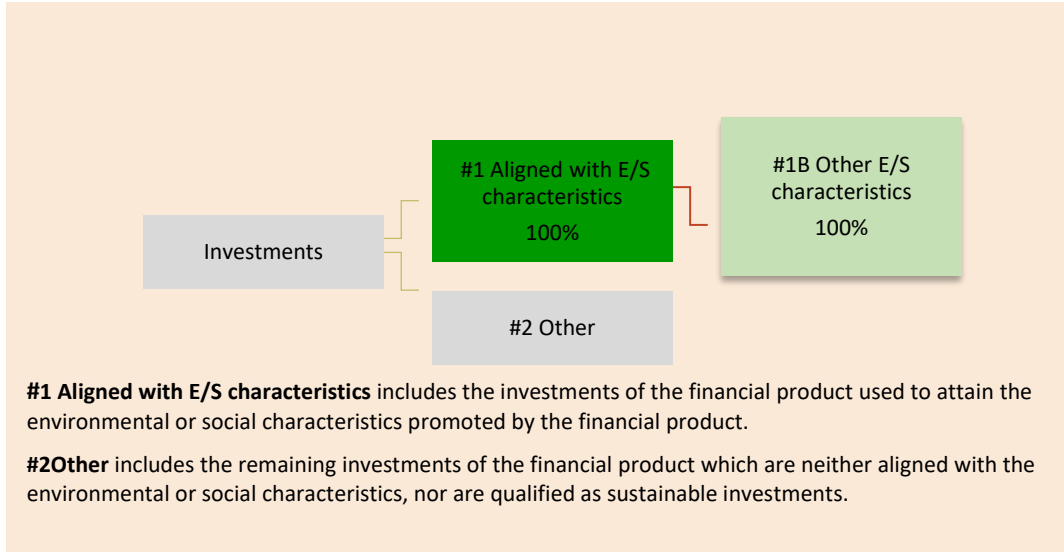


WASTE MANAGEMENT INC	Industrials	3,98%	US
MARSH & MCLENNAN COS	Financials	3,98%	US
UNIVERSAL MUSIC GROUP NV	Communication Services	3,97%	NL
DESCARTES SYSTEMS GRP/THE	Information Technology	3,84%	CA
AMAZON.COM INC	Consumer Discretionary	3,71%	US
ZOETIS INC	Health Care	3,67%	US
MICROSOFT CORP	Information Technology	3,56%	US
ALPHABET INC-CL C	Information Technology	3,56%	US

**What was the proportion of sustainability-related investments?**

N/A

**What was the asset allocation?**



**In which economic sectors were the investments made?**

- Communication Services
- Consumer Discretionary
- Consumer Staples
- Financials
- Health Care
- Industrials
- Information Technology

To comply with the EU Taxonomy, the criteria for **fossil gas** include limitations on emissions and switching to fully renewable power or low-carbon fuels by the end of 2035. For **nuclear energy**, the criteria include comprehensive safety and waste management rules.

**Enabling activities** directly enable other activities to make a substantial contribution to an environmental objective.

**Transitional activities** are activities for which low-carbon alternatives are not yet available and among others have greenhouse gas emission levels corresponding to the best performance.



are sustainable investments with an environmental objective that **do not take into account the criteria** for environmentally sustainable economic activities under Regulation (EU) 2020/852.



## To what extent were the sustainable investments with an environmental objective aligned with the EU Taxonomy?

N/A

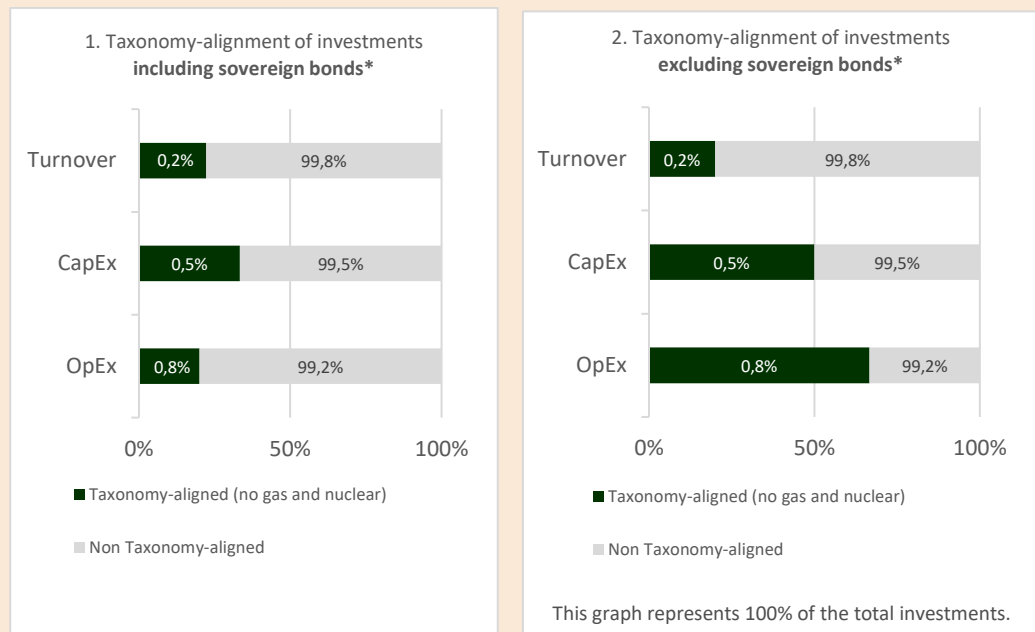
- Did the financial product invest in fossil gas and/or nuclear energy related activities complying with the EU Taxonomy<sup>1</sup>?

Yes:

In fossil gas  In nuclear energy

No

*The graphs below show in green the percentage of investments that were aligned with the EU Taxonomy. As there is no appropriate methodology to determine the taxonomy-alignment of sovereign bonds\*, the first graph shows the Taxonomy alignment in relation to all the investments of the financial product including sovereign bonds, while the second graph shows the Taxonomy alignment only in relation to the investments of the financial product other than sovereign bonds.*



\* For the purpose of these graphs, 'sovereign bonds' consist of all sovereign exposures.

- What was the share of investments made in transitional and enabling activities?

<sup>1</sup> Fossil gas and/or nuclear related activities will only comply with the EU Taxonomy where they contribute to limiting climate change ("climate change mitigation") and do not significantly harm any EU Taxonomy objective - see explanatory note in the left hand margin. The full criteria for fossil gas and nuclear energy economic activities that comply with the EU Taxonomy are laid down in Commission Delegated Regulation (EU) 2022/1214.



N/A

- **How did the percentage of investments that were aligned with the EU Taxonomy compare with previous reference periods?**

N/A



**What was the share of sustainable investments with an environmental objective not aligned with the EU Taxonomy?**

N/A



**What was the share of socially sustainable investments?**

N/A



**What investments were included under “other”, what was their purpose and were there any minimum environmental or social safeguards?**

N/A



**What actions have been taken to meet the environmental and/or social characteristics during the reference period?**

No actions required



**How did this financial product perform compared to the reference benchmark?**

N/A

- **How does the reference benchmark differ from a broad market index?**

N/A

- **How did this financial product perform with regard to the sustainability indicators to determine the alignment of the reference benchmark with the environmental or social characteristics promoted?**

N/A

- **How did this financial product perform compared with the reference benchmark?**

N/A

- **How did this financial product perform compared with the broad market index?**

N/A

**Reference benchmarks** are indexes to measure whether the financial product attains the environmental or social characteristics that they promote.